

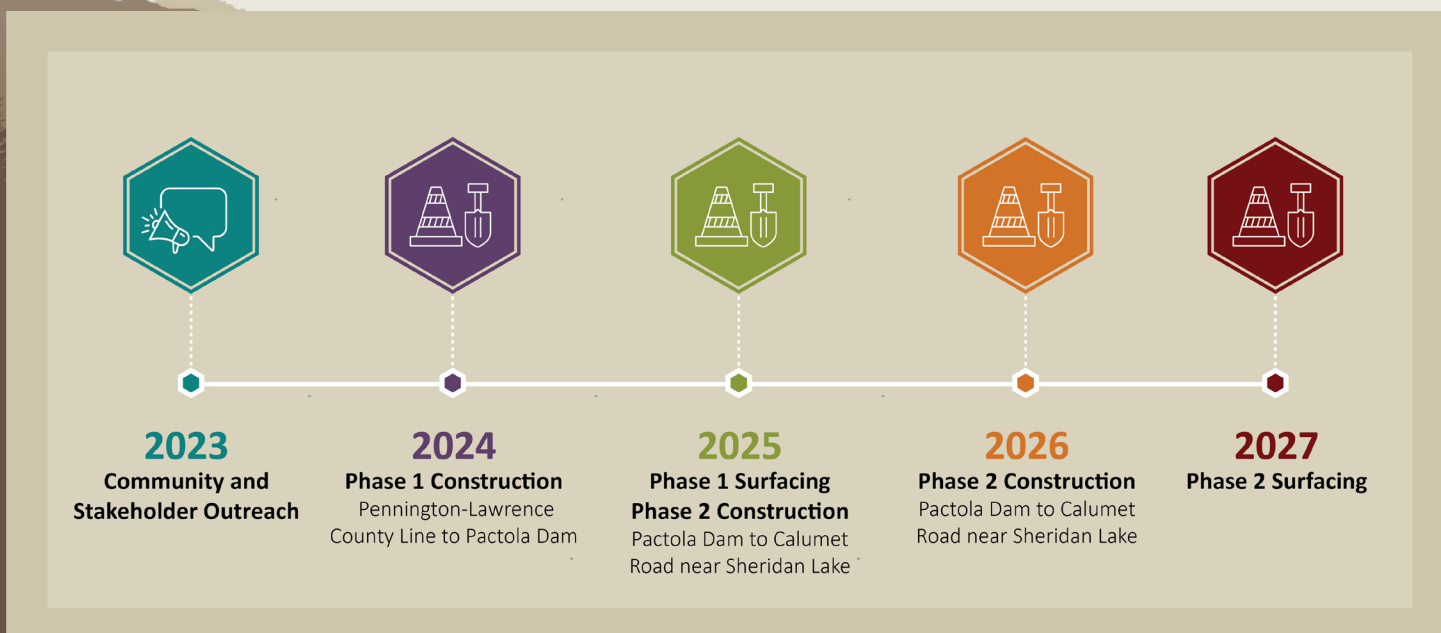
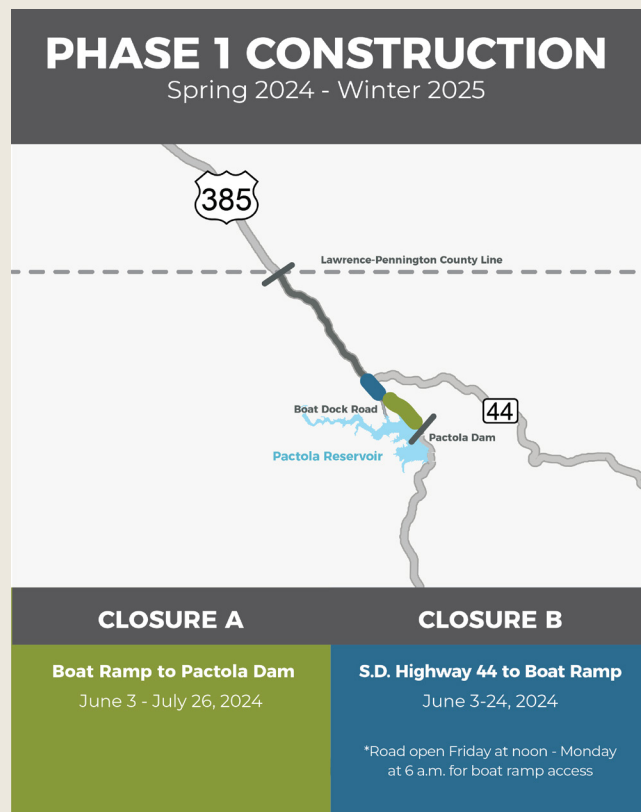
# U.S. HIGHWAY 385 CONSTRUCTION

PENNINGTON-LAWRENCE COUNTY LINE TO SHERIDAN LAKE

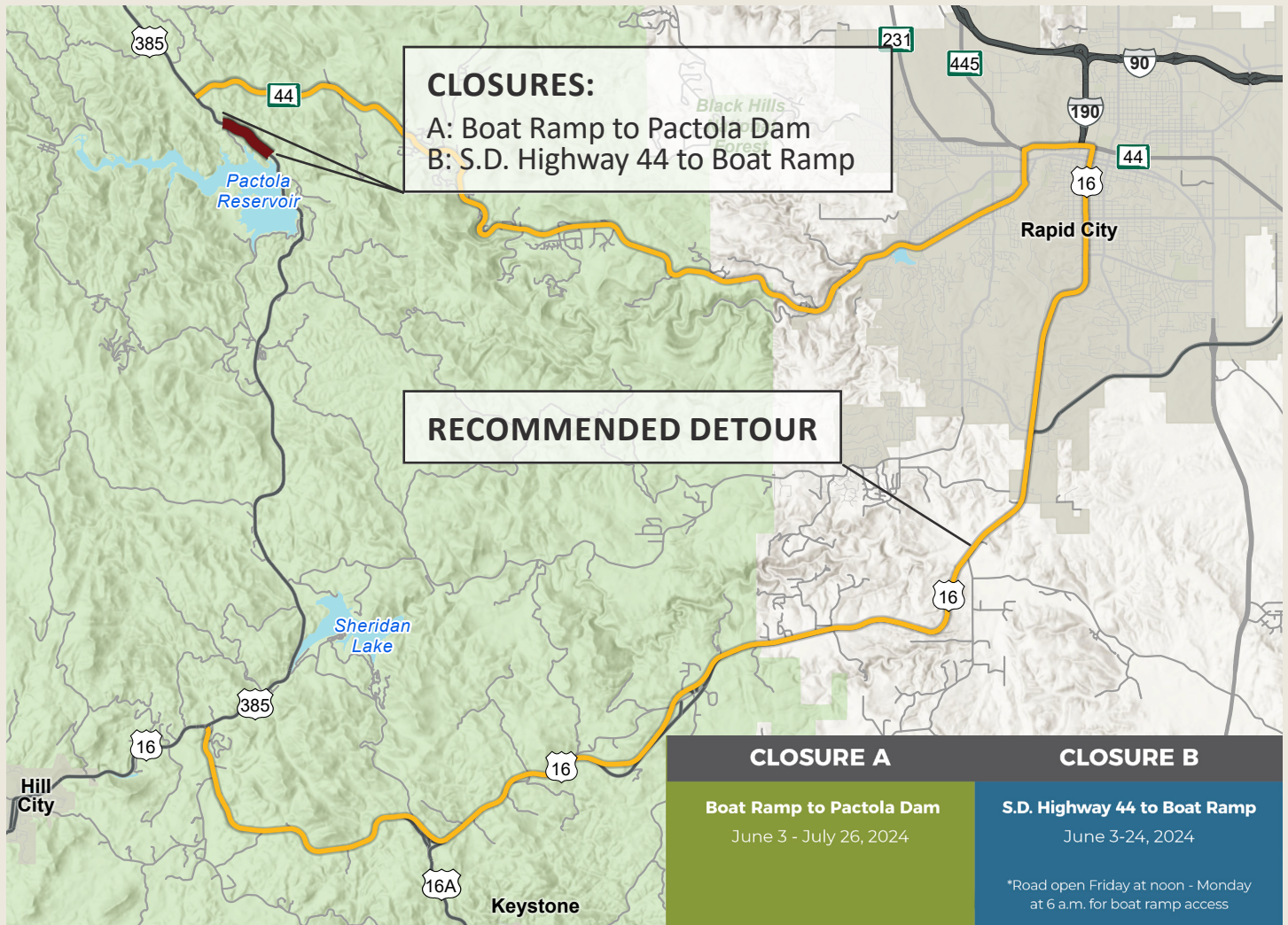


## What is the U.S. Highway 385 construction project?



The South Dakota Department of Transportation (SDDOT) is reconstructing a portion of U.S. Highway 385 between the Pennington-Lawrence county line and the south end of Sheridan Lake (Calumet Road). Once completed, this section of Highway 385 will feature safety improvements, including wider shoulders on each side of the road where possible, improved road curves to meet current design standards, additional turning lanes to improve traffic flow, and new surfacing.



# 2024 Construction Highlights (Phase 1)



## STAY IN TOUCH!

-  South Dakota Department of Transportation
-  @SouthDakotaDOT
-  [www.us-385.com](http://www.us-385.com)
-  [Connect@us-385.com](mailto:Connect@us-385.com)